

arkray

FULLY-AUTOMATED INTEGRATED URINE ANALYZER

AUTION HYBRID™

AU-4050

The power of two—in one small design

The world's first **fully-automated, integrated urine chemistry** and **sediment analyzer**



Smallest footprint
in the market:
31.5" x 28.3" x 28.3"

FULLY-AUTOMATED INTEGRATED URINE ANALYZER

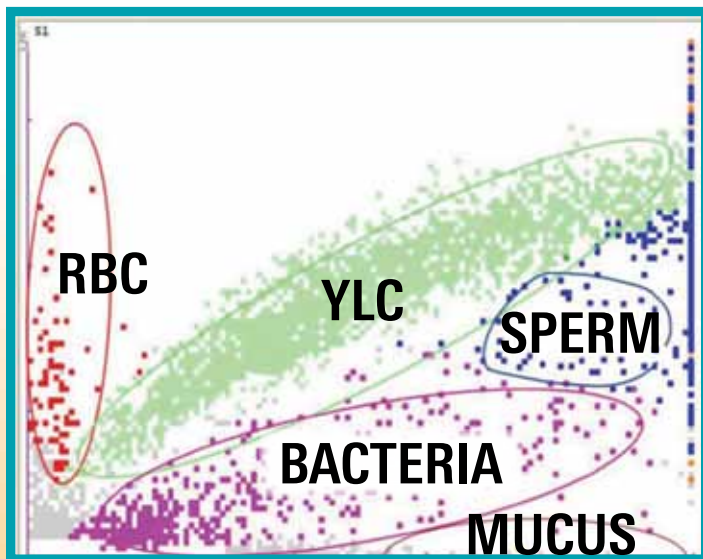
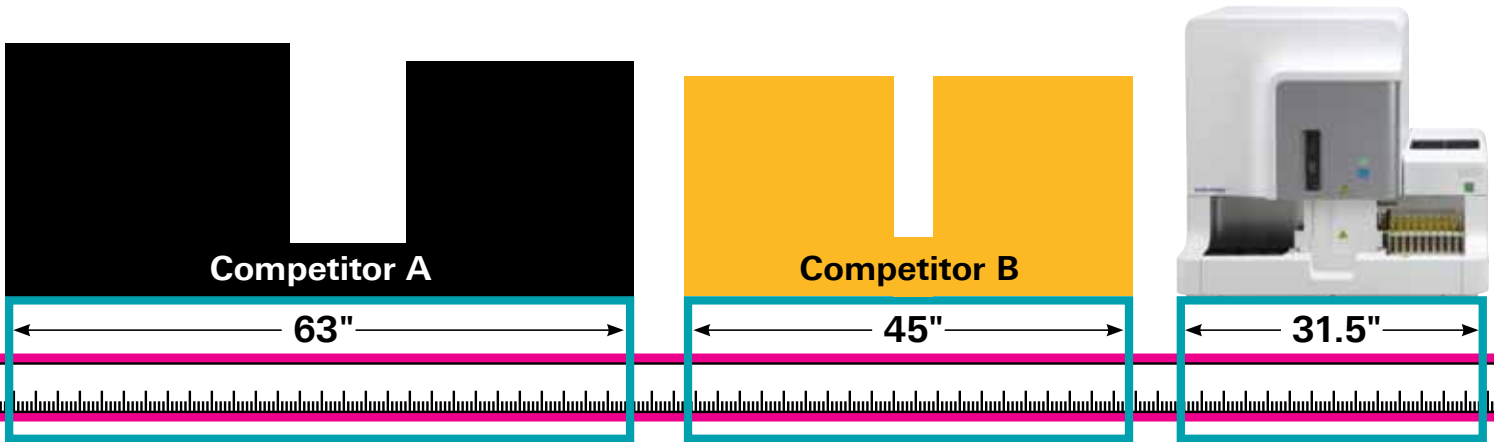
AUTION HYBRID™

AU-4050



Saves valuable lab space

Smallest footprint in the industry—no need to redesign or build out the lab to automate urinalysis



AUTION HYBRID™ AU-4050 scattergram

Urinalysis efficiency and standardization

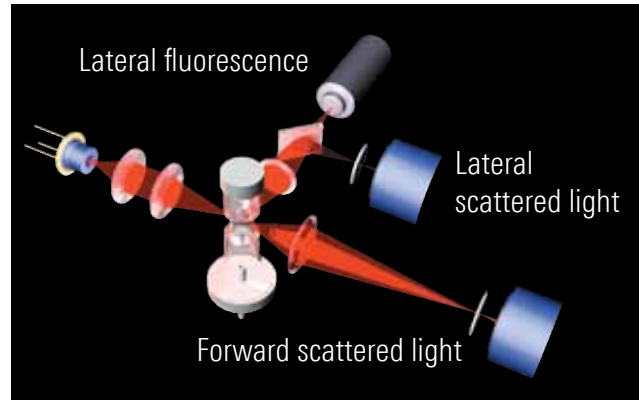
- Fully automates urine testing
- Holds 400 test strips for continuous testing
- Focuses tech engagement time at the microscope
- Connects directly to LIS or through Data Innovations
- Delivers first report in 2 minutes, 15 seconds
- Processes 100–200 samples/hour

High level of bacteria detection

- Uses a separate analysis channel and special dye to precisely differentiate bacteria nuclear materials

Reliable technology with confidence

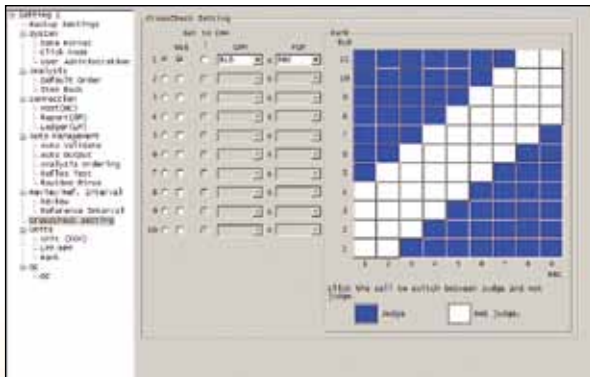
- Semi-conductor laser-based fluorescent flow cytometry provides accurate and precise particle counts previously unachievable by visual methods
- Precise measurement of each detected particle is based on:
 - Lateral scattered light which measures the particles internal complexity
 - Forward scattered light which measures the size/volume of the particle
 - Lateral fluorescent light that measures the stained parts of the particle such as the nucleus, cytoplasm, and membranes



Semi-conductor laser-based fluorescent flow cytometry

Data Analysis Function

- Urine chemistry test results can be defined to automatically trigger sediment tests (Reflex)
- Cross Check function compares chemistry test results and sediment analysis results
- Detailed scattergrams



High Precision

- Urine color is automatically corrected
- Abnormal urine colors are automatically detected and flagged
- Automatic temperature correction
- Specific gravity correction factor applied to samples that are positive for protein and glucose.

Proven Exceptional Support

- Global urine experts
- Comprehensive training program at ARKRAY and on-site
- Free CEU credits for product training and urinalysis education
- Product installation and validation
- 24/7 technical support

Ordering Details

| Product # | Description | Packaging |
|-----------|---------------------------------|---|
| 14601 | AUTION HYBRID™ AU-4050 Analyzer | One analyzer + computer hardware and software |
| 73521 | Uriflet™ S, 9HA Test Strips | 100 strips/bottle, 10 bottles/pack |
| 73806 | AUTION™ Control Solution | 47 mL/bottle, one low & one high |
| 73807 | AUTION™ Diluent (SED) | 2.1L/bottle, one bottle/box |
| 73808 | AUTION™ Diluent (BAC) | 2.1L/bottle, one bottle/box |
| 73809 | AUTION™ Staining Solution (SED) | 29mL/bottle, one bottle/box |
| 73810 | AUTION™ Staining Solution (BAC) | 29mL/bottle, one bottle/box |
| 73811 | AUTION™ Sheath Solution | 20L/bottle, one bottle/box |
| 79053 | Concentrated Washing Solution 3 | 1L/bottle, five bottles/box |
| 79053-1 | Concentrated Washing Solution 3 | 1L/bottle, one bottle/box |
| 97550 | SG Calibrator Solution | 10mL bottle, one bottle per pouch |
| 11721 | Check Strip Set (white/gray) | 2 strips each/vial |

AUTION HYBRID™

AU-4050

| Specifications | |
|-----------------------------------|---|
| Dimensions | 31.5" (W) x 28.3" (D) x 28.3" (H) |
| Weight | 265 lbs (120 kg) including the sampler unit |
| Urine Sample | Urine Required: 5 mL (1.2 mL for manual measurement) |
| Consumption | 2.2 mL (0.95 mL CHM & 1.2 FCM) |
| Memory | 10,000 analyses (urine chemistry testing, urine sediment analysis, quality control analysis, and check measurement) |
| Throughput | 100-200 samples/hour (varies depending on the proportion of urine chemistry and sediment analysis) |
| External Output | RS-232C, Ethernet |
| Communication Output | Compatible with AUTION MAX™ AX-4030, AUTION MAX™ AX-4280, Sysmex UF1000i™, Sysmex UF-100™ |
| Laser Class | Class I (IEC60825-1) |
| Operating Conditions | Temperature: 10-40°C (50-104°F) Humidity: 20-80% RH (non-condensing) |
| Analysis Environment | Temperature: 15-30°C (59-86°F) Humidity: 30-60% RH (non-condensing) |
| Temperature Compensation Function | Yes |
| Warm Up Time | 20 minutes |
| Power Supply | AC 100-240 V, 50/60 Hz |
| Power Consumption | 400 VA |
| Urine Chemistry Performance (CHM) | |
| Analysis Parameters | Glucose (GLU), Protein (PRO), Bilirubin (BIL), Urobilinogen (URO), pH, Blood (BLD), Ketone (KET), Nitrite (NIT), Leukocyte (LEU), Specific Gravity (SG), Turbidity, Color (Hue) |
| Principle of Measure | Test strips: dual-wavelength reflectance method (BLD: single wavelength) Urine specific gravity: reflection refractometry method Urine color: transmission measurement method Urine turbidity: light-scattering measurement method |
| Wavelength | Five LED wavelengths (430, 500, 565, 635, 760 nm) |
| Test Strip Storage Capacity | Maximum 400 strips (200 strips/feeder unit) |
| Reagents and Test Strips | Concentrated Washing Solution 3, Uriflet™S, 9HA Test Strips |
| Urine Sediment Performance (FCM) | |
| Analysis Parameters | Red Blood Cells (RBC), White Blood Cells (WBC), Epithelial Cells (EC), Casts (CAST), Bacteria (BACT) |
| Principle of Measure | Flow cytometry method using a 635 nm red semiconductor laser |
| Flagging Parameters | Crystal (XTAL), Yeast-like Cell (YLC), Small Round Cell (SRC), Pathological Cast (Path. CAST), Mucus (MUCUS), Sperm (SPERM) |
| Service Information | Red Blood Cell Information (RBC-Info), Conductivity Information (Cond-Info), Bacteriuria Information (BACT-Info) |
| Reagents | AUTION Diluent (SED), AUTION Diluent (BAC), AUTION Staining Solution (SED), AUTION Staining Solution (BAC), AUTION Sheath Solution, AUTION Control Solution |

Trademarks are the property of their respective owners.