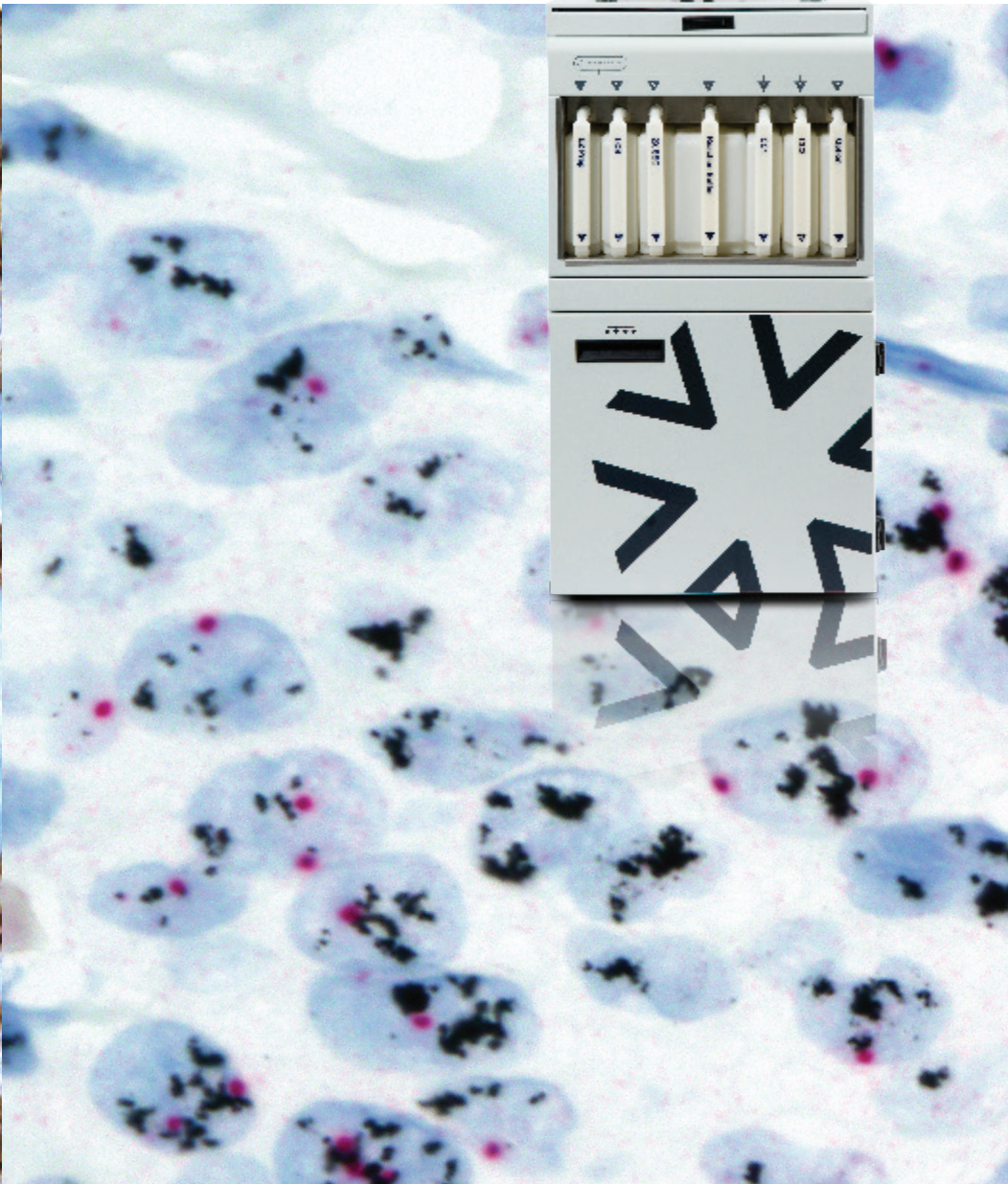
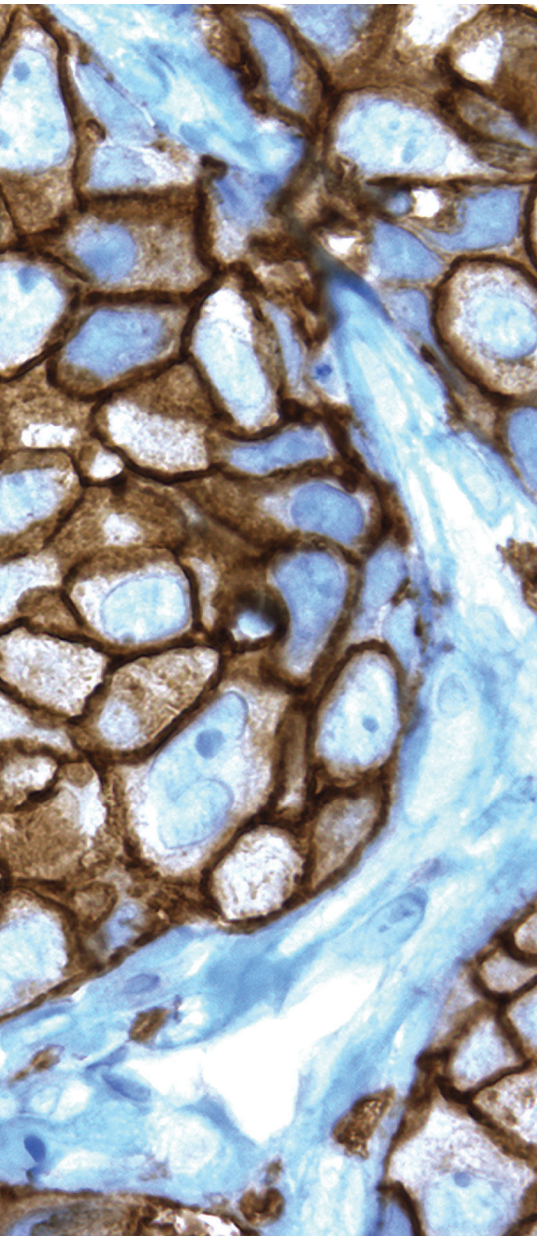


# BenchMark GX

*Quality, reliability, and automated staining*



# BenchMark GX IHC/ISH automated staining instrument

The VENTANA BenchMark GX automated staining instrument offers the flexibility you need to expand your test menu, process more slides, and improve your turnaround times. Best of all, this sophisticated and elegant solution empowers you to transition from manual or semi-automated staining systems to perform the latest IHC and ISH testing.

## Quality

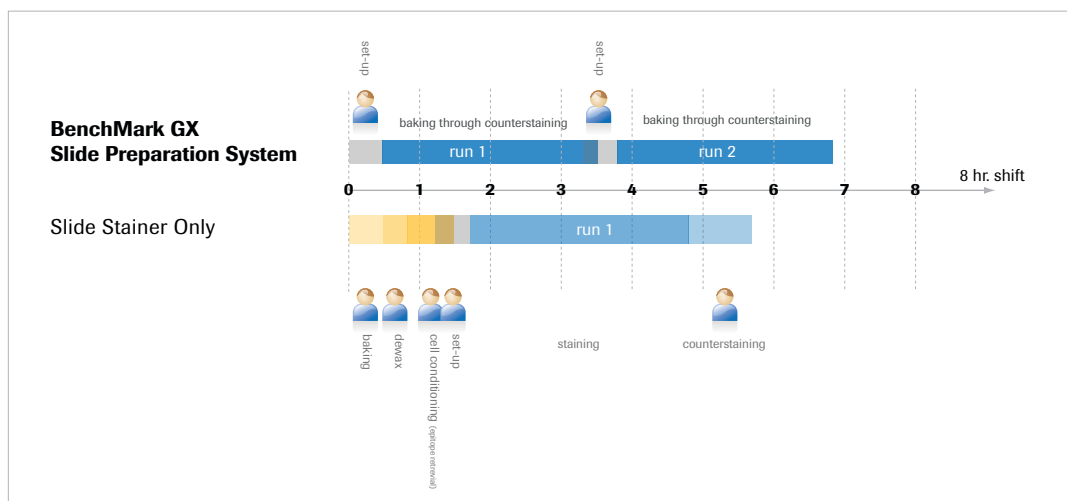
Enhance staining quality, consistency, and reproducibility in a controlled, kinetically optimized reaction environment.

## Flexibility

Automate any or all slide preparation steps, from baking through counterstaining. Process your SISH, IHC, ISH, or FITC slides and optimise your protocols with flexible options.

## Productivity

Experience the benefits of walk away automation, increase your slides-per-hour performance by up to 25%, and eliminate up to 80% of manual tasks.



## Staining module

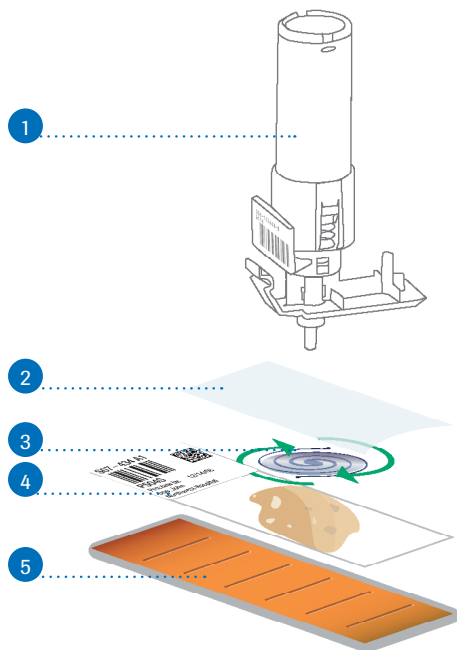
The staining module creates an optimized environment for the automated preparation of slides. The VENTANA BenchMark GX automated staining instrument throughput: 20 slides per run, up to 40 slides in 6 hours, and up to 20 additional slides overnight.

## Fluidics module

Seven easy access bottles provide on-board bulk fluid capacity for up to 60 slides. Bottle sensors monitor fluid levels.

## Waste module

Level-sensing waste container provides walk-away capacity for up to 60 slides or 3 IHC runs.



### 1. Barcoded reagent dispensers

Provide reagent information for quality control, enable fast system start up, and monitor, track, and flag protocols to be run by the instrument.

### 2. Liquid coverslip

Creates a reaction chamber on the surface of each slide, controlling evaporation, protecting tissue integrity, and minimizing the amount of reagent used.

### 3. Air vortex mixing

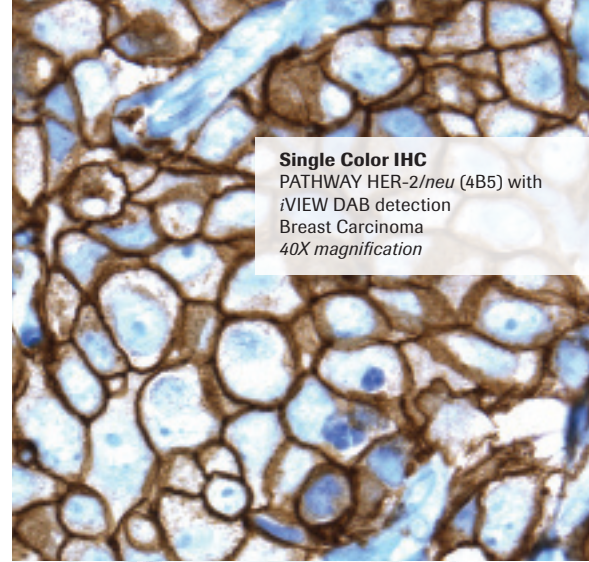
Blends the aqueous layer under the liquid coverslip, mixing reagents and ensuring uniform reaction kinetics across the entire surface of the slide.

### 4. Slide-specific label

Determines and initiates which protocol is to be run and provides patient and case identification. VANTAGE slide labels and connectivity are also supported for positive patient ID.

### 5. Slide heater pads

Individual temperature-controlled heating pads allow precise target temperatures ranging from ambient to 95°C, which maintain proper conditions for denaturing, hybridization, and stringency.



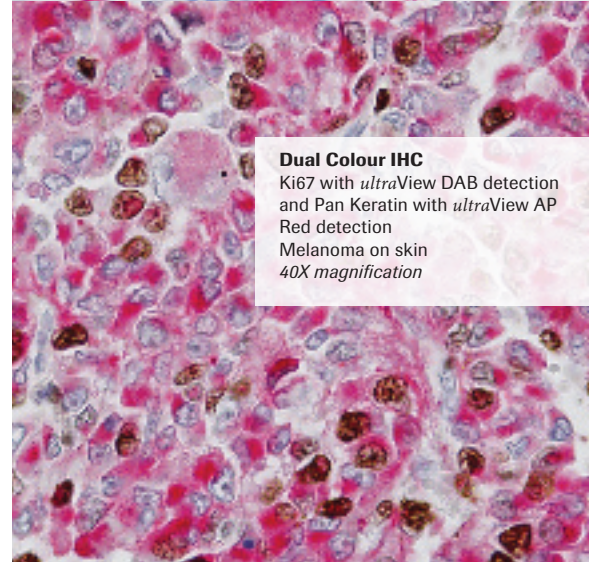
**Single Color IHC**  
PATHWAY HER-2/*neu* (4B5) with  
iVIEW DAB detection  
Breast Carcinoma  
40X magnification



**HER2 Dual ISH**  
INFORM HER2 Dual ISH DNA Probe  
Cocktail with *ultraView* SISH DNP  
Detection kit and *ultraView* Red ISH  
DIG Detection kit. Breast carcinoma  
with low-level amplification of HER2  
60X magnification



**Single Color IHC**  
*Helicobacter pylori* (Polyclonal)  
with *ultraView* Universal  
AP Red detection  
Gastric tissue  
20x magnification



**Dual Colour IHC**  
Ki67 with *ultraView* DAB detection  
and Pan Keratin with *ultraView* AP  
Red detection  
Melanoma on skin  
40X magnification