



Clinical Chemistry

## Ready to optimize your workflows?

Thermo Scientific Indiko and Indiko Plus analyzers  
for clinical chemistry and specialty testing

# Power your lab with Indiko analyzers

Thermo Scientific™ Indiko™ and Indiko Plus are fully automated, random-access benchtop analyzers for labs of any size. They offer maximum ease of use, reliability, and cost-effectiveness for clinical chemistry and specialty testing.



## Small footprint, big impact

Fits into any lab environment and still handles up to 300,000 tests per year



## Always low-maintenance

Equipped with durable components for a system family average of <1 service visit per year



## Results you can trust

Validated, traceable, and backed by 50+ years of experience





## High throughput

Do not let the term “benchtop” fool you – despite their size, Indiko and Indiko Plus are high-capacity analyzers suitable for up to 300,000 tests per year.



## Optimal sample & reagent capacity

Looking for maximum convenience? These analyzers can hold up to 108 samples and 42 reagents on board and offer different sample rack options.



## Long walk-away time

If you often find yourself thinking, “I wish there were more hours in a day,” you will appreciate the up to 3 hours of walk-away time that free you up to focus on other tasks.



## Minimal water consumption

With only 1.5–2.5 liters of water required per hour, you can do your part to help preserve the environment and keep operating costs low at the same time.



**Indiko**

up to 200 photometric tests/hour



**Indiko Plus**

up to 350 photometric tests/hour

The Indiko product family is designed to meet all your needs.

# Easy to use and maintain

With Indiko analyzers, implementing and maintaining a daily testing routine is **as easy as ABC**.

# A

## Automation for your lab

- Daily startup and standby procedures
- Barcoded reagents identification
- Clot detection
- (Pre-)dilution, reruns, reflex testing
- Real-time QC data transfer
- Bidirectional LIS connection

# B

## Benchtop analyzer with self-contained water supply

- Small footprint for any space
- No need for external water or drainage connections
- Quick and easy installation

# C

## Convenient sample & reagent management

- Loading of any mix of sample cups and barcoded primary tubes
- Three different sample racks available
- Real-time monitoring of reagent usage and expiration date
- Full calibration and lot traceability



<1 service visit  
per year\*

\* System family average



This is the Indiko maintenance formula

**5** | **15** | **30**  
min/day | min/week | min/month  
for maximum uptime of your analyzer



Watch the maintenance video  
[thermofisher.com/indiko-maintenance](https://thermofisher.com/indiko-maintenance)

### High mean time between failures

Indiko analyzers are among the most reliable systems on the market. With <1 service visit\* per year, you can count on increased productivity in your lab.

### Maintenance-free xenon light source

The analyzers' light source not only provides fast measurement: it is also incredibly long-lasting, eliminating costs due to downtime and lamp replacements.

### Maintenance-free electrodes

The optional Direct ISE unit lets you measure sodium, potassium, and chloride with ion-selective electrodes. The sample matrix remains unaltered in the process. And: the ionic strength and activity reflect the true in vivo situation.

The **disposable cuvette design** ensures accuracy, protects against contamination, and speeds up analytical routines since no washing is necessary.

Simplify day-to-day operations and reduce maintenance costs

# Compliant right out of the box

Maintaining the highest quality standards is crucial for your lab. Thankfully, Indiko analyzers are designed to help you accomplish this.



## Backed by 50+ years of experience

All Indiko analyzers, trusted by clinical labs around the globe, are manufactured in Vantaa, Finland. Thermo Fisher Scientific's Vantaa Center of Excellence is renowned for its advanced IVD instrumentation and lab automation solutions. The center complies with the requirements of the FDA and various international institutions.

## Fully validated

Once the analyzer is installed, nothing stands in the way of operational excellence.

Our entire solution – complete with reagents and controls – is fully validated, providing traceable results.

## Quality and environmental management systems

ISO 9001:2015    ISO 13485:2016

ISO 14001:2015    MDSAP ISO 13485:2016



# Single platform, universal coverage

Ready to use, time-saving, and always reliable: Indiko system reagents deliver high-quality results for optimal patient monitoring.

Clinical Chemistry*	Specific Proteins*	DATs	TDMs*	Serum Toxicology
Albumin	Albumin in urine	Amphetamines	Amikacin	Acetaminophen
Alkaline Phosphatase	Apolipoprotein A1	Amphetamines/ Ecstasy	Carbamazepine	Barbiturate
ALT	Apolipoprotein B	Barbiturate	Digoxin	Benzodiazepine
Amylase	Complement C3	Benzodiazepine	Digitoxin	Tricyclic
AST	Complement C4	Buprenorphine	Gentamicin	Antidepressants
Bicarbonate	CRP	Cannabinoids (THC)	Lamotrigine	
Bilirubin	CRP, high sensitivity	Cocaine	N-Acetylprocainamide	
Calcium	D-Dimer	Cotinine	Phenobarbital	<b>Oral Fluid Assays*</b>
Cholesterol	Ferritin	Ecstasy	Phenytoin	Amphetamine
Cholinesterase	HbA1c	Ethyl Alcohol	Procainamide	Methamphetamine
HDL-Cholesterol	Immunoglobulin A	Ethyl Glucuronide †	Quinidine	Cocaine
LDL-Cholesterol	Immunoglobulin G	Fentanyl †	Teicoplanin	Opiate
CK	Immunoglobulin M	Heroin Metabolite	Theophylline	PCP
CK-MB	Rheumatoid Factors	Hydrocodone ‡	Tobramycin	THC
Creatinine	sTfR	LSD	Topiramate	
Gamma-GT	Transferrin	Methadone	Valproic Acid	
Glucose		Methadone Metabolite	Vancomycin	
Iron		Methaqualone	Zonisamide	
LDH		Opiate		<b>Specimen Validity Tests</b>
Lipase	<b>Electrolytes*</b>	Opiate 2K	<b>Endocrine Assays*</b>	
Magnesium	Chloride	Oxycodone	Total Thyroxine (T4)	Creatinine-Detect
Phosphorus	Sodium	Phencyclidine (PCP)	T-Uptake	General Oxidant-Detect
Total Protein	Potassium	Propoxyphene		Gravity-Detect
Triglycerides		Synthetic Cannabinoids - AB Pinaca §	<b>ISDs*</b>	pH-Detect
U/CSF Protein		Synthetic Cannabinoids - UR- 144/XLR-11 §	Cyclosporine	Sample Check
Urea		Tramadol ‡	Everolimus	
Uric acid		Tricyclics	Tacrolimus	
			Mycophenolic Acid	

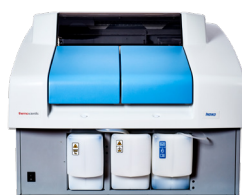
**Availability of products in each country depends on the local regulatory marketing authorization status.**

\* Not available for sale in the U.S.

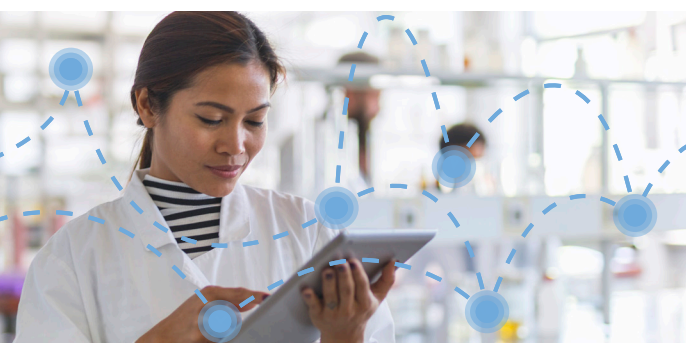
† Available for sale in the U.S. only for Criminal Justice & Forensics (CJ&F) use

‡ Available for sale only in the U.S. and Canada

§ Available for sale only in the U.S. for CJ&F use



	Indiko	Indiko Plus
<b>Capacity</b>	Photometric tests/hour: up to 200 ISE tests/hour: up to 120	Photometric tests/hour: up to 350 ISE tests/hour: up to 135
<b>On-board sample capacity</b>	Max 90 with 5 x 18-pos. sample rack	Max 108 with 6 x 18-pos. sample rack
<b>On-board reagent capacity</b>	Max 30 with 1 x 9- or 18-pos. sample rack and 5 x 6-pos. reagent rack	Max 42 reagent positions
<b>Walk-away time</b>	Up to 2 hours	Up to 3 hours
<b>Water consumption</b>	1.5 liters/hour	2.5 liters/hour
<b>Dimensions (WxDxH) &amp; weight</b>	75 cm x 70 cm x 62 cm / 130 cm with the open cover & 85 kg 29.5 in x 27.6 in x 24.4 in / 51 in with the open cover & 187 lbs	94 cm x 70 cm x 62 cm / 130 cm with the open cover & 110 kg 37 in x 27.6 in x 24.4 in / 51 in with the open cover & 242 lbs



## Smartify your lab

Save time and improve efficiency in your lab with Thermo Scientific LabLink xL™ Quality Assurance Software



Learn more about LabLink xL and Auto-Connectivity Software features and requirements at [maslablink.com](https://maslablink.com)

### Clinical Diagnostics

**USA**  
46500 Kato Road  
Fremont, CA 94538 USA  
Tel. 800-232-3342 / +1 510-979-5000  
[sales.diagnostics.fmt@thermofisher.com](mailto:sales.diagnostics.fmt@thermofisher.com)

**Asia Pacific**  
Tel. +65 6499 9999  
[cdd.asia.info2@thermofisher.com](mailto:cdd.asia.info2@thermofisher.com)

**Australia**  
Tel. +61 1800 333 110  
[auiinfo@thermofisher.com](mailto:auiinfo@thermofisher.com)

**Canada**  
Tel. +1 905-286-4290  
[CDD.Canada@thermofisher.com](mailto:CDD.Canada@thermofisher.com)

**China**  
Tel. +86 400 650 5118  
[sales.china@thermofisher.com](mailto:sales.china@thermofisher.com)

**France, Belgium (Brussels / Wallonia) & Luxembourg**  
Tel. +33 (0) 1 40 86 65 00  
[cdx.fr.info@thermofisher.com](mailto:cdx.fr.info@thermofisher.com)

**Germany**  
Tel. +49 (0) 3302 883 608  
[cdx.de.info@thermofisher.com](mailto:cdx.de.info@thermofisher.com)

**Hong Kong**  
Tel. +852 3107 7600  
[SDG.HK.Sales@thermofisher.com](mailto:SDG.HK.Sales@thermofisher.com)

**Italy**  
[distributor.cdd@thermofisher.com](mailto:distributor.cdd@thermofisher.com)

**Japan**  
Tel. +81 (0) 120 489 211  
[JPYOK-CDD.QC@thermofisher.com](mailto:JPYOK-CDD.QC@thermofisher.com)

**Netherlands & Belgium (Flemish)**  
Tel. +49 3302 883 660  
[Info.benelux.cdd@thermofisher.com](mailto:Info.benelux.cdd@thermofisher.com)

**New Zealand**  
Tel. +61 0800933 966  
[nzinfo@thermofisher.co.nz](mailto:nzinfo@thermofisher.co.nz)

**Nordic**  
Tel. +46 8 594 691 30  
[info.nordic.cdd@thermofisher.com](mailto:info.nordic.cdd@thermofisher.com)

**Russia**  
Tel. +7 495 739 76 41  
[info.btd.moscow@thermofisher.com](mailto:info.btd.moscow@thermofisher.com)

**South Africa**  
Tel. +27 11 792 6790  
[support-za.idd@thermofisher.com](mailto:support-za.idd@thermofisher.com)

**Spain & Portugal (Iberia)**  
Tel. +34 93589 8338  
[CDD.Info.ES@thermofisher.com](mailto:CDD.Info.ES@thermofisher.com)

**Switzerland & Austria**  
Tel. +41 26 663 86 70  
[cdx.ch.info@thermofisher.com](mailto:cdx.ch.info@thermofisher.com)

**United Kingdom & Ireland**  
Tel. +44 1442 868 940  
[cdx.UK.info@thermofisher.com](mailto:cdx.UK.info@thermofisher.com)

**For Countries Not Listed**  
[distributor.cdd@thermofisher.com](mailto:distributor.cdd@thermofisher.com)

**Manufacturer**  
Thermo Fisher Scientific Oy  
Ratastie 2, 01620 Vantaa, Finland  
+358-10-329-200

Learn more at [thermofisher.com/indikosystems](https://thermofisher.com/indikosystems)